

# Estimation Answers

Solve the clues to find the four-digit code to escape the classroom!

a. If you are giving an estimate for  $24.3 \times 149$ , what number do you use in place of 24.3?

**20**

b. Estimate the solution to  $24.3 \times 149$

**$20 \times 100 = 2000$**

c. Estimate the solution to  $\frac{5.11 \times 371}{19}$

**$\frac{5 \times 400}{20} = 100$**

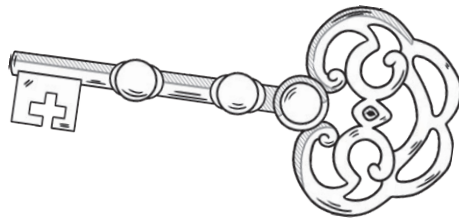
d. Estimate the solution to  $\frac{63 \times 19}{0.51}$

**$\frac{60 \times 20}{0.5} = 2400$**

The code is given by the first digit in the answer to part a, the second digit in the answer to part b, the first digit in the answer to part c and the second digit in the answer to part d.

Exit Code: 

2	0	1	4
---	---	---	---



# Estimation Answers

Solve the clues to find the four-digit code to escape the classroom!

a. If you are giving an estimate for  $24.3 \times 149$ , what number do you use in place of 24.3?

**20**

b. Estimate the solution to  $24.3 \times 149$

**$20 \times 100 = 2000$**

c. Estimate the solution to  $\frac{5.11 \times 371}{19}$

**$\frac{5 \times 400}{20} = 100$**

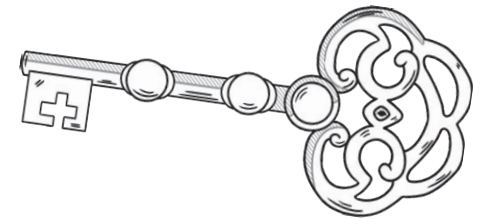
d. Estimate the solution to  $\frac{63 \times 19}{0.51}$

**$\frac{60 \times 20}{0.5} = 2400$**

The code is given by the first digit in the answer to part a, the second digit in the answer to part b, the first digit in the answer to part c and the second digit in the answer to part d.

Exit Code: 

2	0	1	4
---	---	---	---



# Estimation

Solve the clues to find the four-digit code to escape the classroom!

a. If you are giving an estimate for  $24.3 \times 149$ , what number do you use in place of 24.3?

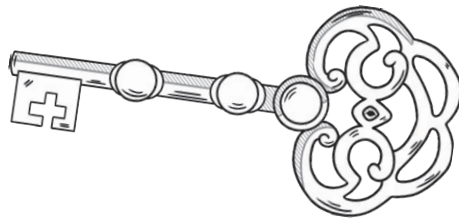
b. Estimate the solution to  $24.3 \times 149$

c. Estimate the solution to  $\frac{5.11 \times 371}{19}$

d. Estimate the solution to  $\frac{63 \times 19}{0.51}$

The code is given by the first digit in the answer to part a, the second digit in the answer to part b, the first digit in the answer to part c and the second digit in the answer to part d.

Exit Code:



# Estimation

Solve the clues to find the four-digit code to escape the classroom!

a. If you are giving an estimate for  $24.3 \times 149$ , what number do you use in place of 24.3?

b. Estimate the solution to  $24.3 \times 149$

c. Estimate the solution to  $\frac{5.11 \times 371}{19}$

d. Estimate the solution to  $\frac{63 \times 19}{0.51}$

The code is given by the first digit in the answer to part a, the second digit in the answer to part b, the first digit in the answer to part c and the second digit in the answer to part d.

Exit Code:

